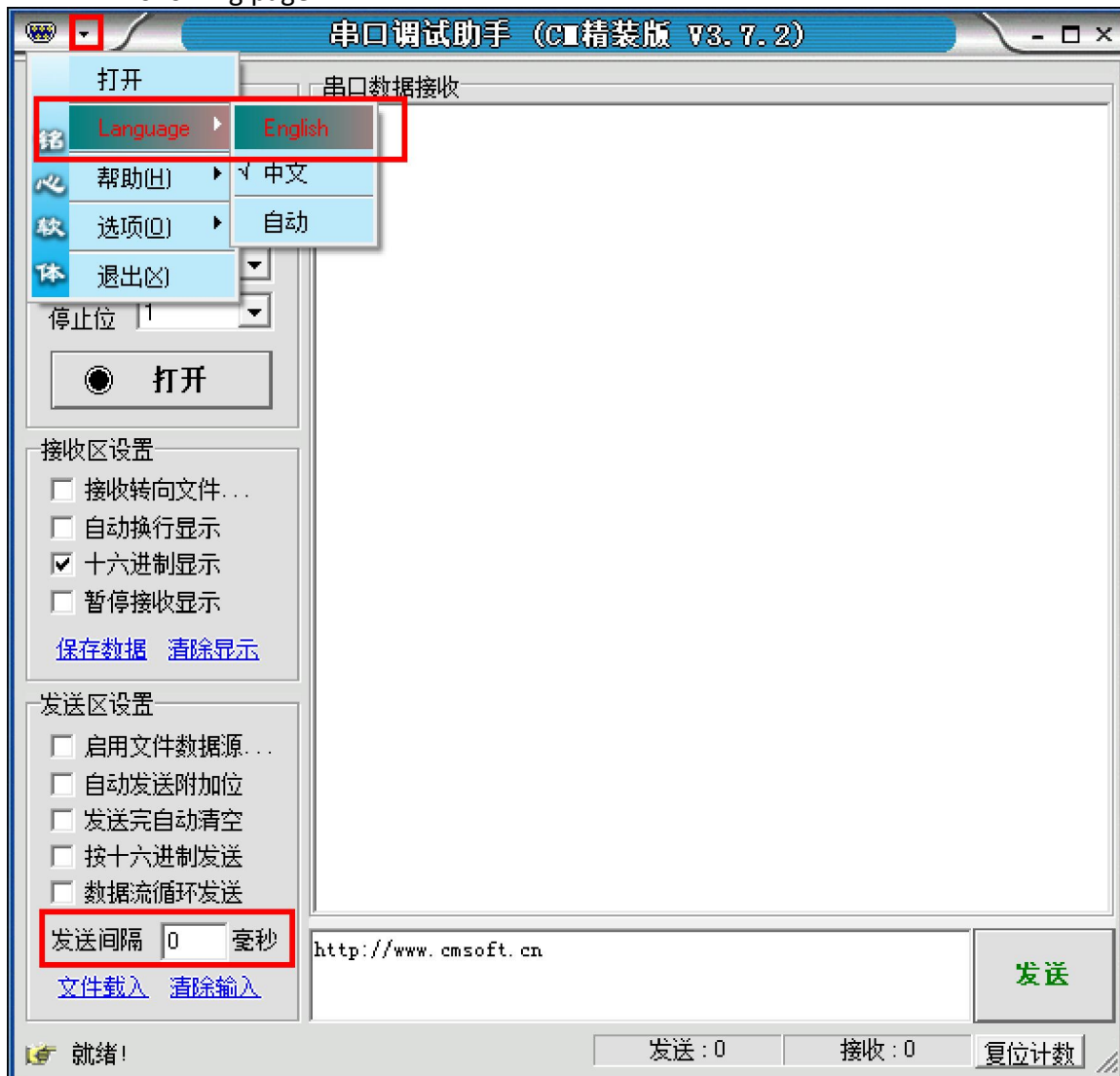


---

## LPQ58 Font Downloads

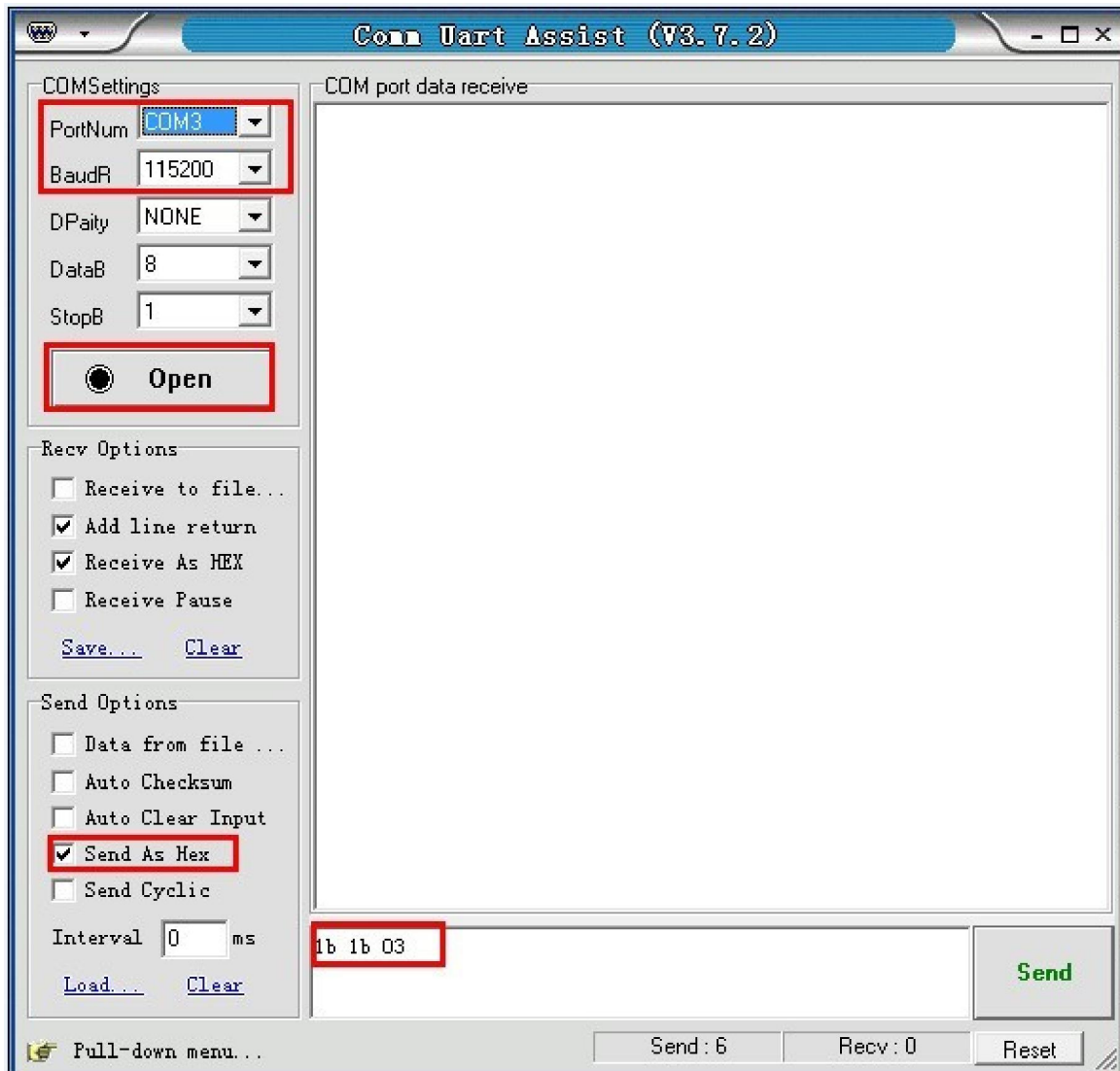
1. To speed up the font downloads, please check the printer baud rate first, if the baud rate is not 115200, adjust the baud rate to 115200, please refer to “Quick Start Guide” in attachment for the parameter setting to set the baud rate. Then please connect printer by serial cable with PC and power on the printer.
2. Open the “Uart Assist” in attachment, please switches the language Chinese to English as the following page:



Pic.1

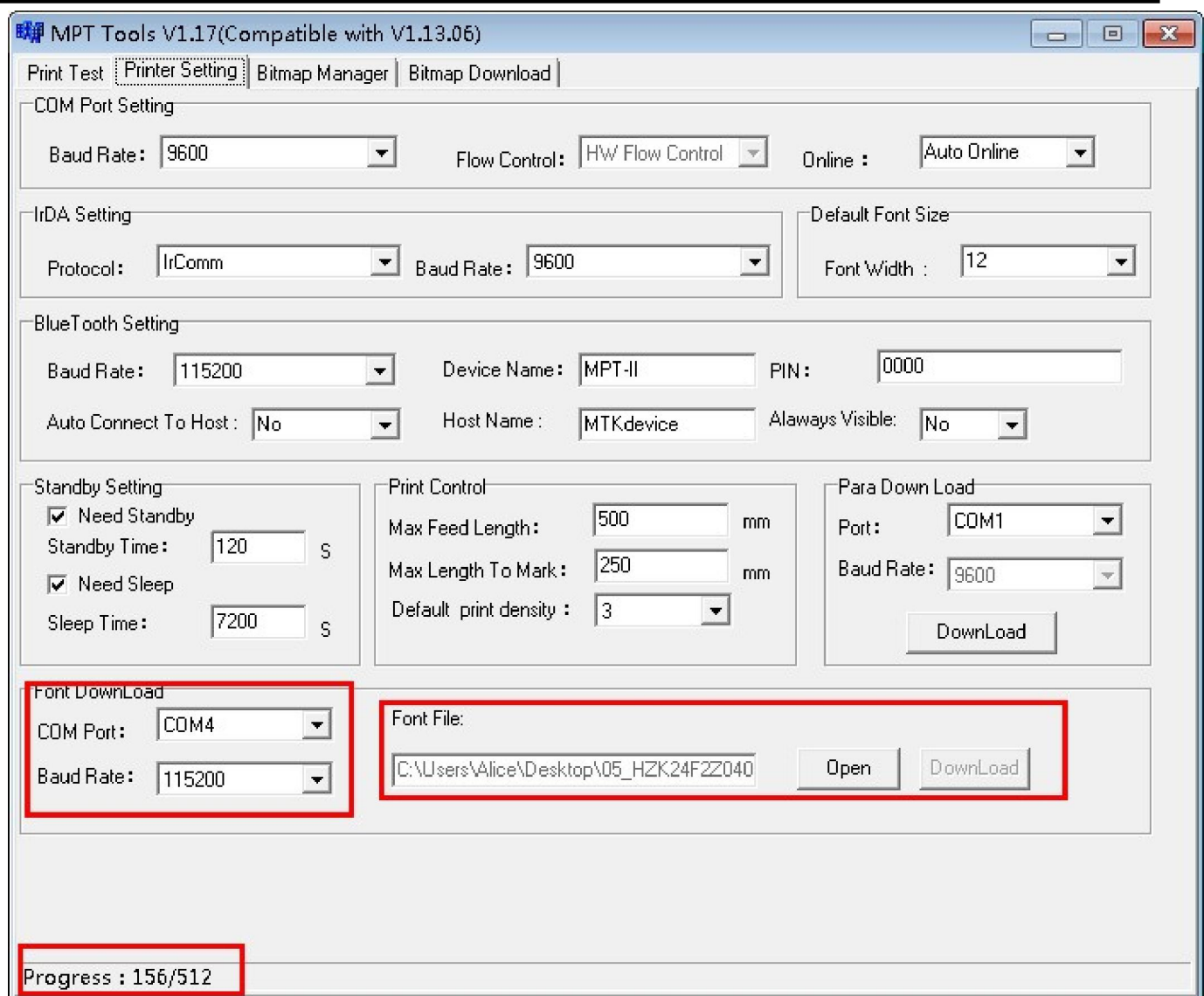
As PIC.2 shown: “PortNum” to choose correct port No., baud rate is 115200, Click “Open”, the icon will turn into “Close”, it means the port open succeed. Choose “Send as Hex” and enter the “1b 1b 03” in the sending window, then click “Send”, after click “Close”. Please do it only one time and the printer should be power on.

---



Pic.2

3. Open the "MPTTools" in attachment, as Pic.3, choose the correct COM Port, choose "baud rate-115200", click "Open" and choose the "05\_HZK24F2Z040(International).bin", then click "download", you will see "Progress" on the bottom left till it shows "Font Download Finished".



Pic. 3

4. Print self-test page to check the font download, if not successful, please do the following 3 steps again.

## Switch language to Russian codepage

Open the “Comm Uart Assist (V3.7.2)” to choose the COM No., as Pic.4, and to send baud rate command “1b 74 07” to switch the code page to CP866, and send “1b 74 06” command to the WPC 1252, you could print out the self-test page to check the codepage No.

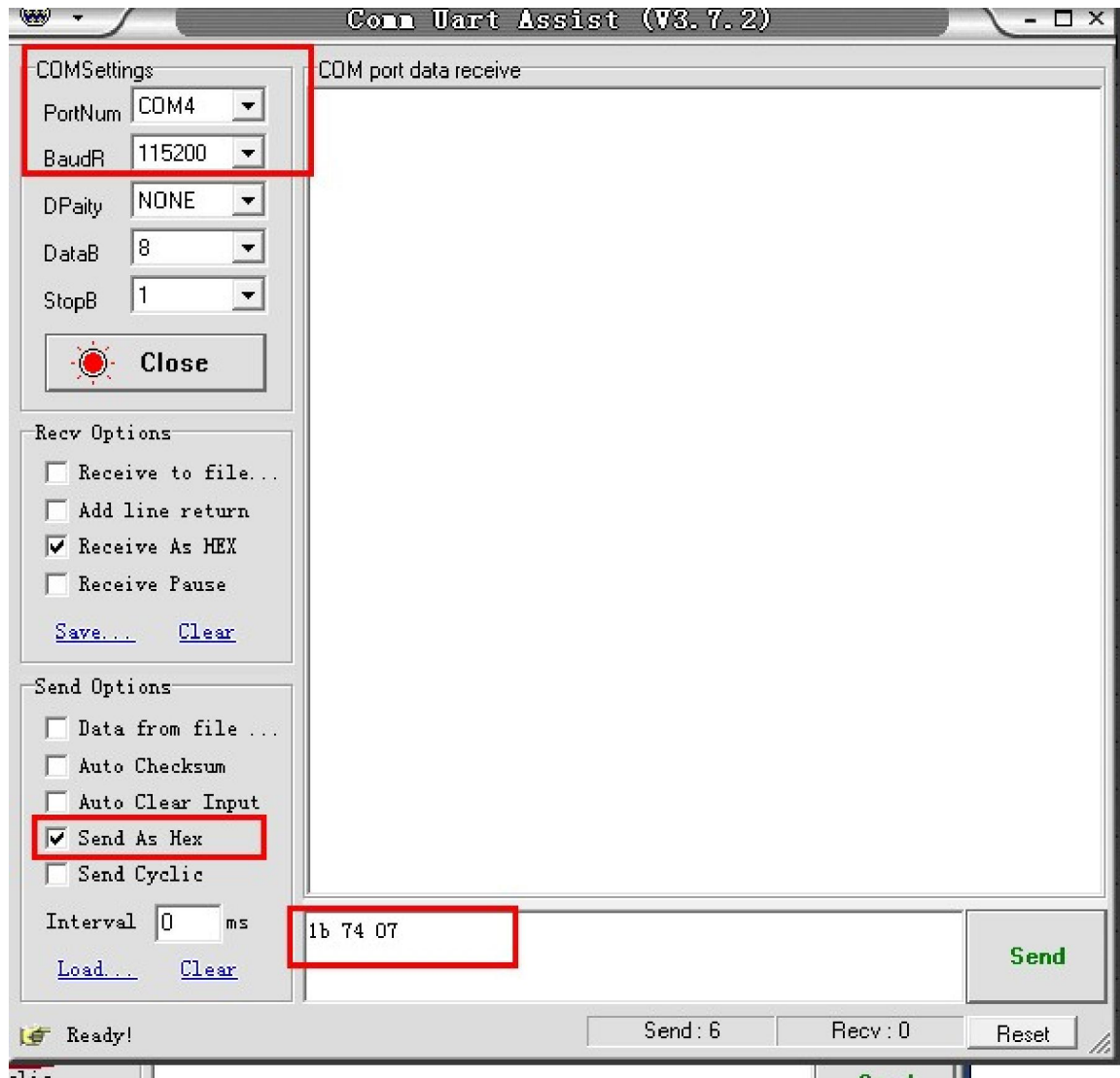


图 4

---

## Here are the font commands table :

Font command= 74 n, n stands for the language No. on the first column .

For example: 1b 74 1, means to change the code page to Katakana.

12*24		
N	代码页	Code Page
0	CP437 [美国, 欧洲标准]	CP437 [U. S. A. , Standard Europe]
1	<b>KataKana [片假名]</b>	<b>Katakana</b>
2	CP850 [多语言]	CP850 [Multilingual]
3	CP860 [葡萄牙]	CP860 [Portuguese]
4	CP863 [加拿大-法语]	CP863 [Canadian-French]
5	CP865 [北欧]	CP865 [Nordic]
6	WCP1251 [斯拉夫语]	WCP1251 [Cyrillic]
7	CP866 斯拉夫2	CP866 Cyrillic #2
8	MIK[斯拉夫/保加利亚]	MIK[Cyrillic /Bulgarian]
9	CP755 [东欧, 拉脱维亚 2]	CP755 [East Europe, Latvian 2]
10	[伊朗, 波斯]	Iran
11	保留	reserve
12	保留	reserve
13	保留	reserve
14	保留	reserve
15	CP862 [希伯来]	CP862 [Hebrew]
16	WCP1252 [拉丁语 1]	WCP1252 Latin I
17	WCP1253 [希腊]	WCP1253 [Greek]
18	CP852 [拉丁语 2]	CP852 [Latina 2]
19	CP858 [多种语言拉丁语 1+欧元符]	CP858 Multilingual Latin I +Euro)
20	伊朗 II [波斯语]	Iran II
21	拉脱维亚	Latvian
22	CP864 [阿拉伯语]	CP864 [Arabic]
23	ISO-8859-1 [西欧]	ISO-8859-1 [West Europe]
24	CP737 [希腊]	CP737 [Greek]
25	WCP1257 [波罗的海]	WCP1257 [Baltic]
26	泰文 (与TM-88 Thai character code 14同)	Thai
27	CP720[阿拉伯语]	CP720[Arabic]
28	CP855	CP855
29	CP857[土耳其语]	CP857[Turkish]
30	WCP1250[中欧]	WCP1250[Central Eurpoe]
31	CP775	CP775
32	WCP1254[土耳其语]	WCP1254[Turkish]
33	WCP1255[希伯来语]	WCP1255[Hebrew]
34	WCP1256[阿拉伯语]	WCP1256[Arabic]

---

---

35	WCP1258[越南语]	WCP1258[Vietnam]
36	ISO-8859-2[拉丁语2]	ISO-8859-2[Latin 2]
37	ISO-8859-3[拉丁语3]	ISO-8859-3[Latin 3]
38	ISO-8859-4[波罗的语]	ISO-8859-4[Baltic]
39	ISO-8859-5[斯拉夫语]	ISO-8859-5[Cyrillic]
40	ISO-8859-6[阿拉伯语]	ISO-8859-6[Arabic]
41	ISO-8859-7[希腊语]	ISO-8859-7[Greek]
42	ISO-8859-8[希伯来语]	ISO-8859-8[Hebrew]
43	ISO-8859-9[土耳其语]	ISO-8859-9[Turkish]
44	ISO-8859-15[拉丁语9]	ISO-8859-15 [Latin 3]
45	[泰文2]	Thai2
46	CP856	CP856
47	Cp874	Cp874

---

---